

Follow @SIRUIImaging



Instagram



Facebook



Twitter

www.sirui.com

Guangdong SIRUI Optical Co.,Ltd.

The catalog is compiled as comprehensive and detailed as possible based on the existing information. But color, standard configuration and specifications are subject to change without notice.



Create Stunning Visions

SIRUI Mobile Photography & Videography Accessories Catalog



SIRUI, Capturing Your Imagination

Considering and solving problems according to customers' demands is the concept that SIRUI always recognizes and adheres to. Because of it, SIRUI has won the recognition and support from the photographers and shutterbugs all over the world. SIRUI has established an impressive customer service network throughout the world, and over 300 sales outlets and terminal showrooms. SIRUI also actively participates in various imaging education, public welfare and environmental protection activities to help you capture your imagination!

SIRUI, Creating with its Ambition

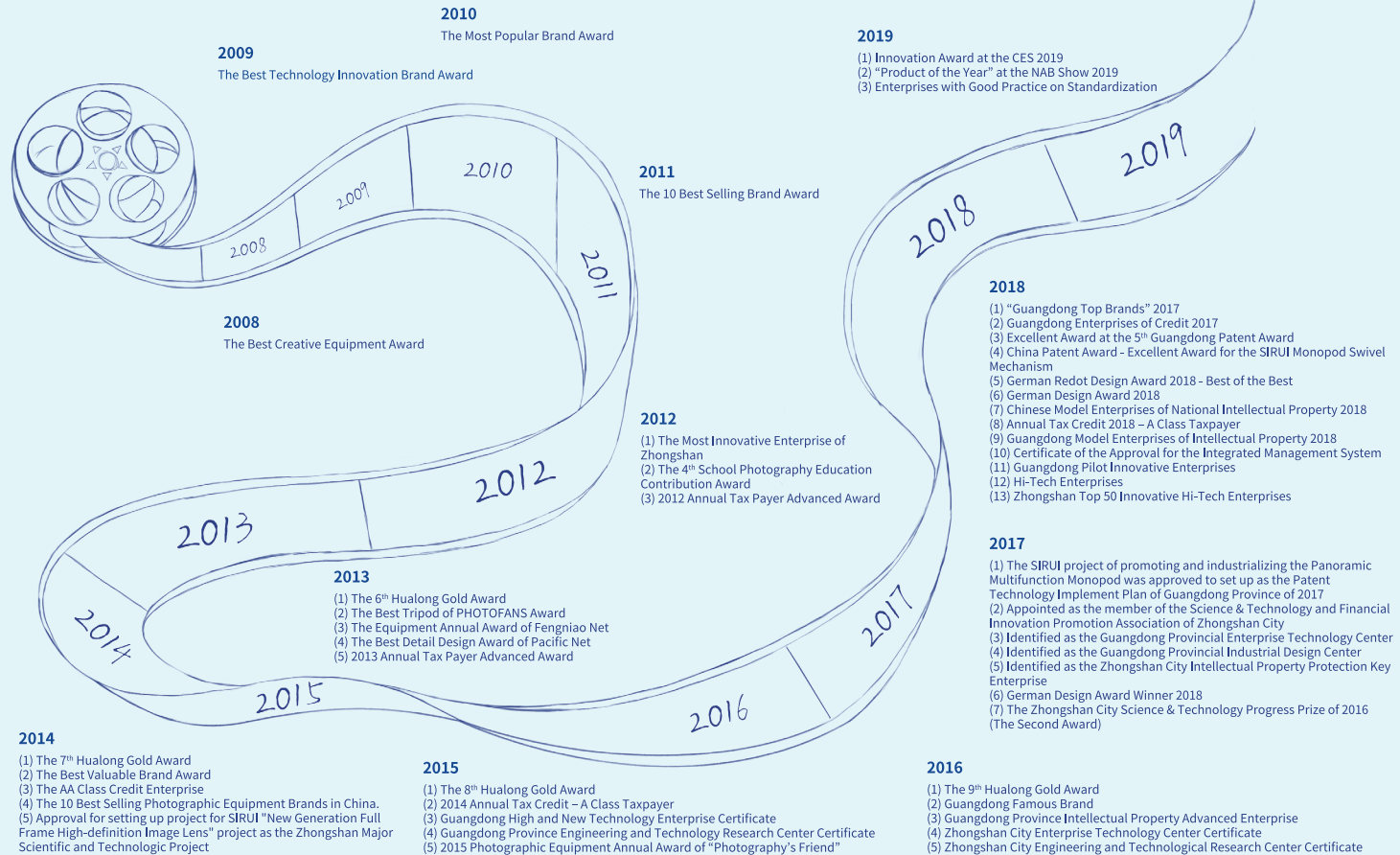
In the past decades, SIRUI insisted in improving and strengthening itself on the road of exploration, accumulation and development. Looking toward to the future, SIRUI will further promote the progress of Imaging Industry with its technology and innovation. SIRUI is changing people's imaging life with its aspiring attitude and creation.

SIRUI, Developing from Made in China to Innovated in China

SIRUI always focuses on its research and development capacities, and insists to develop with independent innovation. We believe, with focus on "Technology Accumulation" and "Independent Innovation", SIRUI will reach the leap from Made in China to Innovated in China.



SIRUI Awards and Honors



Contents

SIRUI Mobile Phone Auxiliary Lenses

VD-01 Anamorphic Lens	01
18mm Wide Angle Lens	03
SIRUI Adjustable ND Filter for 18-WA2	05
Circular Polarizer Filter	06
60mm Portrait Lens	07
10X Macro Lens	09
Fisheye Lens	11
Lens Kit	13
400mm Telephoto Lens Kit	15

Pocket Stabilizer

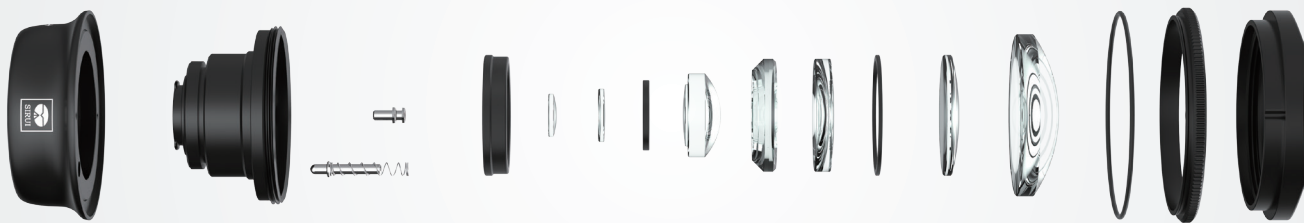
ES-01 Pocket Stabilizer	17
VK-2 Pocket Stabilizer Kit - Plus	19
VK-3 Pocket Stabilizer Kit - Professional	20

Mobile Photography Accessories

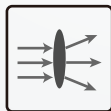
iPhone X Dual Lens Kit	22
Mobile Phone Lens Clip Adapter	23
Bluetooth Remote Controller	24
Multi-directional Mobile Phone Holder	24
Multi-function Universal Mini Clamp	25
Auto-Open Mobile Phone Clamp	25
Multi-functional Table Top Tripod	26
Mobile Table Top Tripod Kit	27
Umbrella Mobile Tripod	28
Mobile Clip Lamp	29

THIS TIME, WE REDEFINE THE PHOTOGRAPHY

SIRUI Mobile Phone Auxiliary Lenses are manufactured with German Manufactured Schott Optical Glass Lens Elements and Aircraft Aluminum Housing and Components for higher imaging quality.



Aircraft Aluminum Housing
and Components



German Manufactured Schott
Optical Glass Lens Elements



Multi-layer Anti-
reflection Coatings



Professional SLR
Imaging Quality

NEW Mobile Phone Auxiliary Lenses

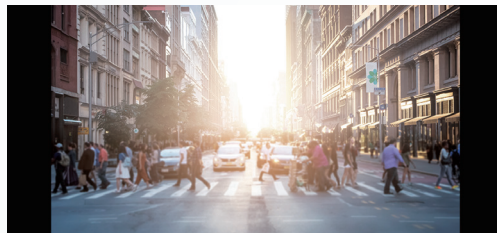


* The SIRUI Lens App is required to convert the mobile video aspect ratio to 2.4:1. The "Filmic Pro" App is available for purchase for more professional features.

● VD-01 Anamorphic Lens

Express the director in you to create cinematic "Widescreen" vision.

The SIRUI Anamorphic Lens with retro-style anti-reflection coating is ideal for mobile photographers to create cinematic "Widescreen" Vision in 2.4:1 aspect ratio and footage with Sci-Fi blue streaks and flares effects.



◦ Image without SIRUI VD-01 Anamorphic Lens



◦ Image with SIRUI VD-01 Anamorphic Lens

Photographer : Derrick Zhang



Specifications

Product: VD-01 Anamorphic Lens

Magnification: 1.33x Horizontal Squeeze

Video Aspect Ratio: 2.4:1 (Widescreen)

Size: 35mm*32mm*21mm/1.37inches*1.25inches*0.82inches (Length*Width*Height)

Angle Adjustment: 90° Rotatable for Shooting Angle Adjustment

Resolution: Center Field of View 500lp/mm, Edge Field of View 300lp/mm

● 18mm Wide Angle Lens

Landscape / Architecture / Group Photo / Selfie

"Wide" ≠ "Wide + Distortion"

SIRUI 18MM Wide Angle Lens facilitates to widen image and better control the edge distortion of image for more stunning images.

The special feature of 18mm Wide Angle Lens improves body proportions in figure photography.



◦ Image without SIRUI Wide Angle Lens



◦ Image with SIRUI Wide Angle Lens



Photographer : hsyh



Specifications

Product: 18mm Wide Angle Lens

Model: 18-WA2

View Angle: About 100°

Focal Length: Equivalent Full Frame 18mm

● SIRUI Adjustable ND Filter for 18mm Mobile Phone Auxiliary Wide Angle Lens

The practical SIRUI Adjustable ND Filter is compatible with the 2nd Generation of SIRUI 18mm Wide Angle Lens to reduce the amount of light entering camera in the range of ND2 to ND400 with a gradual turn of the adjustment ring between Min and Max.

* The ND filter requires a mobile camera app or other professional camera app to create a ideal shot by adjusting relevant parameters or features.



◦ Image without
SIRUI Adjustable ND Filter for 18-WA2



◦ Image with
SIRUI Adjustable ND Filter for 18-WA2

Specifications

Product: SIRUI Adjustable ND Filter for 18mm Mobile Phone Auxiliary Wide Angle Lens

Model: 18-WA2-NDX

Material: German Manufactured Schott Plate Glass C270

Compatible: SIRUI 18mm Wide Angle Lens of 2nd Generation, SIRUI VD-01 Anamorphic Lens

ND Value: 2 - 400

Inner Diameter of Lens Bayonet Mount: \varnothing 35mm/1.38inches



● Circular Polarizer Filter

The SIRUI 18-WA2-CPL is specially designed for the 2nd generation of SIRUI 18mm Wide Angle Lens to further reduce reflection and adjust color and contrast by easily turning the included 360 degrees rotatable bezel.



◦ Image without SIRUI Circular Polarizer Filter



◦ Image with SIRUI Circular Polarizer Filter

Specifications

Product: Circular Polarizer Filter

Model: 18-WA2-CPL

Material:

German Manufactured Schott Glass, Aircraft Aluminum Alloy and
Anti-Reflection Coating

Compatible:

SIRUI 18mm Wide Angle Lens of 2nd Generation, SIRUI VD-01 Anamorphic Lens



Mobile Phone Auxiliary Lenses



◦ Image without SIRUI Portrait Lens



◦ Image with SIRUI Portrait Lens

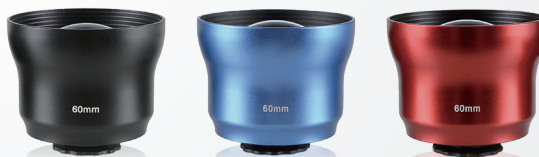
● 60mm Portrait Lens

Portraits / Pets / Food / Stationary Objects

The Secret Weapon of Portrait Photography Master

Zoom in twice the distance to the shooting objects with ideal background blurring with the SIRUI 60mm Portrait Lens. Compared to electronic blurring of dual-lens mobile phone, the optical background blur effect of SIRUI 60MM Portrait Lens produces softer and more realistic images.

The principle of optical imaging secures imaging quality in low light condition and solves the problems of noises and poor pixel in portrait mode when shooting with the mobile phone camera lens at night.



3 Colors for option: Black / Blue / Red ▲

Specifications

Product: 60mm Portrait Lens
Model: 60-SA
View Angle: 40° diagonal

Lens Structure: 6 elements in 4 groups
Optical Distortion: <1.2%
Focal Length: Equivalent Full Frame 60mm

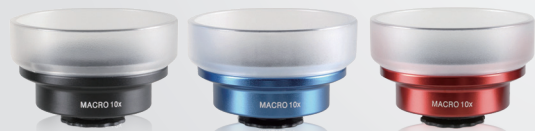


Photographer : Ken Xu



Photographer : Burberry Bao

Mobile Phone Auxiliary Lenses



3 Colors for option: Black / Blue / Red ▲

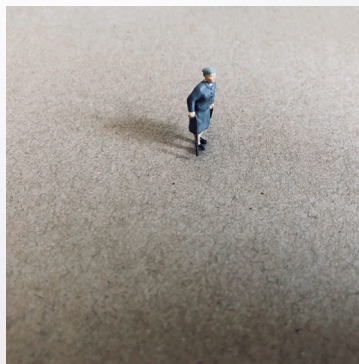
● 10X Macro Lens

Plants / Insects / Jewellery / Creation

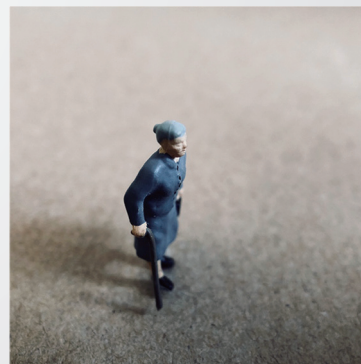
The micro world is more wonderful than we think.

Attach the SIRUI 10X Macro Lens to mobile phone to take macro shots in the minimum focus distance. The Macro Lens is compatible with the detachable SIRUI half-transparent soft light cover to distribute light evenly.

Magnify the shooting objects clearly to further observe and capture the specific parts with the access to 10X optical zoom.



◦ Image without SIRUI Macro Lens



◦ Image with SIRUI Macro Lens



Specifications

Product: 10X Macro Lens
Model: MC-02
View Angle: About 75°

Lens Structure: 3 elements in 2 groups
Optical Distortion: <1%
Magnification: 10X

● Fisheye Lens

Landscapes / Creative Ideas / Animal

Discover a different world of fun

Different from traditional fisheye lens, SIRUI Fisheye Lens enables you to capture amazing images with “panorama” fisheye effect without vignetting.

Experience funny shooting with the special view angle of the ultra wide angle Fisheye Lens.



3 Colors for option: Black / Blue / Red ▲



◦ Image without SIRUI Fisheye Lens



◦ Image with SIRUI Fisheye Lens





Specifications

Product: Fisheye Lens
Model: FE
View Angle: 180° diagonal

Lens Structure: 5 elements in 4 groups
Optical Distortion: 75%

Mobile Phone Auxiliary Lenses



Specifications

3 Lens Kit

The lenses in the kit are optional:

1. Wide Angle Lens ×1, Portrait Lens ×1, Fisheye Lens ×1, Lens Clip Adapter ×1
2. Wide Angle Lens ×1, Macro Lens ×1, Fisheye Lens ×1, Lens Clip Adapter ×1
3. Wide Angle Lens ×1, Macro Lens ×1, Portrait Lens ×1, Lens Clip Adapter ×1

Other Accessories included: Storage Case ×1, Lens Clean Cloth ×1

4 Lens Kit

Kit includes:

Wide Angle Lens 1, Portrait Lens ×1, Macro Lens ×1, Fisheye Lens ×1,
CPL for Wide Angle Lens ×1, Lens Clip Adapter ×1

Available Color for Lenses: All Black

Other Accessories included: Storage Case ×1, Lens Clean Cloth ×1

● Lens Kit

The two optional SIRUI mobile phone auxiliary lens kits: SIRUI Three Lens Kit and SIRUI Four Lens kit, are designed from the perspective of professionalism and portability for mobile phone photographers. SIRUI mobile phone auxiliary lenses, mobile phone lens filter and lens clip adapter have their own function and are combined into a new kit to maximize shooting possibilities.



* SIRUI Mobile Phone Lens Clip Adapter, Mobile Phone Lens Mount Adapter or Mobile Phone Protective Case is required for use with SIRUI Mobile Phone Auxiliary Lenses.

Photographer ♦ Daisy Yao



● 400mm Telephoto Lens Kit

Landscape / Concert / Grandstand Shooting

**Break distance limit and
Maximize shooting possibilities**

Capture close shots of the objects in grandstand, outdoor and other distant shootings with the well-functioning SIRUI 400mm Telephoto Lens Kit.

Kit includes:



Mini Table Top Tripod
& Ball Head×1



400mm
Telephoto Lens×1



Cage×1



Bluetooth
Remote Controller×1



Storage Case×1



Specifications

Product:
400mm Telephoto Lens
Model: TL-400
View Angle: 8°

Lens Structure:
11 elements in 9 groups
TV Distortion: 3%
Focal Length: Equivalent Full Frame 400mm

Pocket Stabilizer

● ES-01 Pocket Stabilizer

Attach the portable SIRUI ES-01 Pocket Stabilizer to solve image blurring and shaking effectively during mobile shooting and live streaming. Put it in the pocket to standby anytime.



2 Colors for option: Black / White ▲

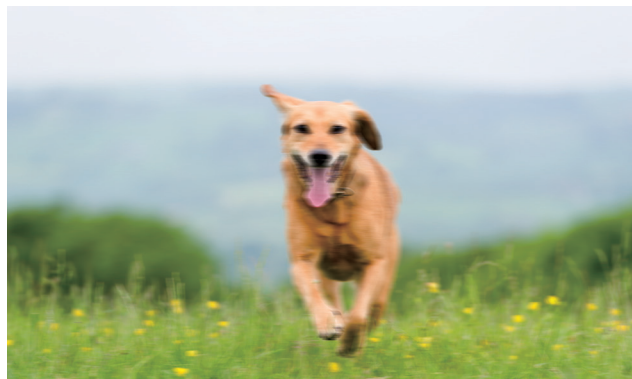
Specifications

Product: Pocket Stabilizer

Model: ES-01

Weight: About 160g / 0.35lbs

Folded Size: 140*42*52mm / 5.5*1.7*2.0inches



◦ Image without SIRUI ES-01 Pocket Stabilizer



◦ Image with SIRUI ES-01 Pocket Stabilizer



Pocket Stabilizer

● VK-2 Pocket Stabilizer Kit - Plus

SIRUI VK-2 Pocket Stabilizer Kit -Plus is an extended mobile photography product specially designed for mobile journey shoot and outdoor live streaming. The kit integrates the functions of anti-shaking, selfie stick, table top tripod and Bluetooth control to solve inevitable problems occurring in journey shoot and outdoor live streaming with a common selfie stick.

* VK-2 Pocket Stabilizer Kit - Plus was awarded CES 2019 Innovation Awards

Selfie Stick ▼ Table Top Tripod ▼



Two Colors for Option: White / Black ▲



SIRUI VK-2
Stabilizer Kit - Plus

Kit includes:



① Table Top Tripod



② Pocket Stabilizer

The CES Innovation Awards are based upon descriptive materials submitted to the judges. CTA did not verify the accuracy of any submission or of any claims made and did not test the item to which the award was given.



● VK-3 Pocket Stabilizer Kit - Professional

The SIRUI VK-3 Pocket Stabilizer Kit - Professional is composed of the 2nd generation of 18mm Wide Angle Lens and the VK-2 Pocket Stabilizer Kit - Plus to break the focal length limitation of mobile phone camera lens and secure your shots even with the 18mm Wide Angle Lens attached for wider shooting range.

Table Top Tripod ▼



Color for option: Black

Kit includes:



① Table Top Tripod



② Pocket Stabilizer



③ 18mm Wide Angle Lens



④ Lens Clip Adapter



Mobile Photography Accessories



● iPhone X Dual Lens Kit

Experience different mobile shoots with the SIRUI iPhone X Dual-Lens Kit by easily attaching the detachable dual lenses composed of a wide angle lens and a medium telephoto lens to the protective case.

The included protective case is constructed with impact-resistant silicone and coated inside with soft fluff to prevent mobile phones from scratches and impact, and is compatible with the SIRUI Wide Angle, Portrait, Fisheye and Macro Lenses.

Specifications

Model:

DL-IPXR iPhone X Dual Lens Kit (Red)

DL-IPXG iPhone X Dual Lens Kit (Grey)





● Mobile Phone Lens Clip Adapter

The SIRUI MSC-06 Mobile Lens Clip Adapter is compatible with the SIRUI Mobile Phone Auxiliary Lenses to attach to most of the mainstream mobile phones and tablets.

Attach and remove the SIRUI mobile phone auxiliary lenses with a quick turn. The locking adapter and safety locking pin secure the lenses as you press the lens clip adapter open to clamp onto the front or rear phone camera.

Specifications

Product: Mobile Phone Lens Clip Adapter

Model: MSC-06

Material: PC Plastic, Soft Rubber Padding

Compatible with:

SIRUI Wide Angle Lens

SIRUI Portrait Lens

SIRUI FE Fisheye Lens

SIRUI 10X Macro Lens

SIRUI VD-01 Anamorphic Lens



● DBT-01 Bluetooth Remote Controller

After turning on Bluetooth Remote Controller, set on mobile phone to connect “SiRui” Bluetooth for remote control shooting within 10 meters, then get ready for group photo and shooting at your desired angle.



DBT-01W



DBT-01K

● TSH-01X-1 Multi-directional Mobile Phone Holder

TSH-01X-1 Multi-directional Mobile Phone Holder is different from traditional mobile phone holders. The design of dual 1/4" screw holes, dovetail slot and T-shape panning accessory slot expands the function of the phone holder. Multi-directional angle adjustment allows you to shoot at more angles.



TSH-01WX-1



TSH-01KX-1



Horizontal Shooting Vertical Shooting

- The shooting angle of mobile phone is adjustable with SIRUI Multi-directional Mobile Phone Holder for switch of horizontal shooting or vertical shooting.



- SIRUI Multi-directional Mobile Phone Holder includes two standard 1/4" screw holes and a dovetail slot to attach to tripods or heads.
- SIRUI Multi-directional Mobile Phone Holder has a panning accessory slot on top for installation of other accessories, like fill light, microphone, etc.

Mobile Photography Accessories

- **MP-MH-01 Multi-function Universal Mini Clamp**

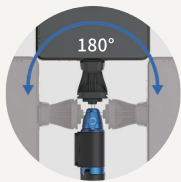
The SIRUI MP-MH-01 Mini Clamp includes a 360 degrees rotatable ball head with a standard 1/4"-20 screw to attach to other photographic accessories and also includes a multi-function universal clamp to fasten onto other round columns within $\Phi 16$ to 28mm/0.6 to 1.1 inches.



- **MP-AC-01 Auto-Open Mobile Phone Clamp**

Easily attachable and detachable, the SIRUI MP-AC-01 mobile phone clamp is compatible with quick release plates and photographic accessories via the built-in 1/4"-20 accessory port for extensive mobile shoots. Need a quick phone setup without a scratch? With a simple press of the tension release button, the phone clamp with rubber cushion padded interior will automatically open to fit or release a mobile phone measuring 4 to 6 inches.





Aluminum Spherical Head

- Stronger Locking Force.
- Easily shoot at multiple angles.



DBT-01 Bluetooth Remote Controller included for TSH-01X



● TSH-01X Multi-functional Table Top Tripod

SIRUI TSH-01X Table Top Tripod Kit is a creative support accessory for mobile photography. It integrates the functions of tripod, selfie stick and Bluetooth to extend mobile shooting.

The Table Top Tripod has anti-slip cushion at the bottom of support feet to shoot steadily and easily folds for a compact fit to store and carry in bag for outdoor shooting.

Specifications

Model	Colour	Sections	Max Dia. mm/inches	Min Dia. mm/inches	Max Height mm/inches	Min Height mm/inches	Weight kg/lbs	Max. Load kg/lbs
TSH-01WX	White	4	18.3/0.72	12.9/0.51	580/22.83	300/11.81	0.23/0.51	0.3/0.66
TSH-01KX	Black	4	18.3/0.72	12.9/0.51	580/22.83	300/11.81	0.23/0.51	0.3/0.66



TSH-01WX



TSH-01KX

NEW Mobile Photography Accessories

● SIRUI 3T-05PH Mobile Table Top Tripod Kit

The compact SIRUI 3T-05PH Kit with its universal phone clamp will secure your shot whether indoors on a table top or outdoors strapped with the included binding belts. With the easy to use 3T-05 mini tripod and Bluetooth remote controller, it can function as a tripod or selfie stick.

* The mobile clamp, Bluetooth remote controller and binding belts are included with the 3T-05PH kit. (Not included with the 3T-05K (sold separately).

Specifications

Model	Min. Height (mm/inches)	Max. Height (mm/inches)	Folded Height (mm/inches)	Weight (kg/lbs)	Max. Load (kg/lbs)
3T-05K	110/4.33	164/6.46	202/7.95	0.145/0.32	3/6.61

Model	Weight(kg/lbs)	Max. Load(kg/lbs)
MP-AC-01	0.04/0.09	0.3/0.66



Remotely shoot via the Detachable Bluetooth Remote Controller up to 10 meters/393.7inches away.



Quickly attach the padded phone clamp to a mobile phone with just one press of the tension release button.



45°/75° Leg Adjustments for Low Angles



NEW Mobile Photography Accessories

● SIRUI MS-01 Umbrella Mobile Tripod

Easy to carry at 390g/0.86lbs, the SIRUI MS-01K Umbrella Tripod quickly switches between a selfie stick and tripod and includes a detachable Bluetooth remote control shutter to shoot up to 10 meters/393.7inches away.

* Included: MS-01K Umbrella Tripod, Auto-Open Phone Clamp, Bluetooth Remote Controller

Specifications

Model	Sections	Tube Dia. (mm/inches)	Min Height (mm/inches)
MS-01K	5	25/0.98	400/15.7
Max Height (mm/inches)	Retracted Height (mm/inches)	Weight (kg/lbs)	Max. Load (kg/lbs)
1380/54.3	355/13.97	0.39/0.86	0.4/0.88



Carry-Less Shooting

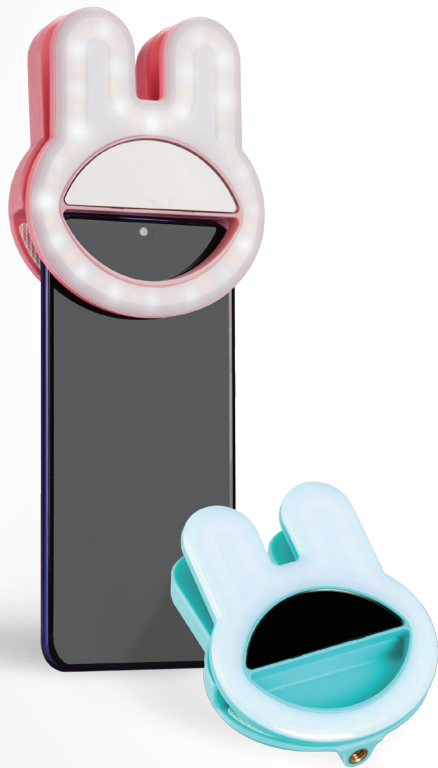


Simply shoot via the detachable Bluetooth Remote Control Shutter up to 10meters/393.7inches away



Easily adjust the mounting platform for portrait, landscape and multi-angle shots.

NEW Mobile Photography Accessories



● **SIRUI MPL-3 Mobile Clip Lamp**

The SIRUI MPL-3 Clip Lamp attaches easily with a spring and padded clip onto most mobile phones or tablets. Adjust the lamp brightness level with a simple turn of the built-in wheel. Set the color temperature to a cold or warm setting for the perfect hue.

Specifications

Model	Size	Charge Time	Battery Capacity
MPL-3P(Pink) MPL-3G(Green)	107.3×91.8×43.7mm/ 4.22×3.61×1.72inches	Approximate 1 to 2 Hours	450mA
Color Temperature	Material	Charging Voltage/ Current	Compatible Devices
Cold/Warm Light 4500 to 7000K	ABS (a strong and resilient plastic)	DC5V 250mA	Most Mobile Phones, Tablets (Not Model Specific)



SIRUI, Capturing Your Imagination!